

# ***B.V. PRODUCTS***

***Mass Finishing Technology***



## ***TechnoVibe DR-Series Bowl Vibrators***



### ***Description:***

TechnoVibe DR-Series bowl vibrators are deep, flat-bottom bowl units with an internal media/parts separation screen. Processing of parts occurs in an anti-clockwise direction. Automatic unloading and separation of parts is achieved by reversing the direction of the machine's motor. This causes the parts and media to vibrate in an anti clockwise direction, forcing down a dam blade and diverting the parts and media over the internal separation screen. Media is sieved back into the work chamber while the parts discharge to a collection bin or secondary operation. Depending on parts and process selection, between 95% and 98% unload of parts can be accomplished.

Options include:

- variable speed process controllers
- sound/splash lids
- compound dosing systems

# ***B.V. PRODUCTS***

***Mass Finishing Technology***



***Work Chamber:***

The precision engineered, steel fabricated chassis which carries a powerful, purpose designed, vibratory motors, is stress relieved after machining and encased in a revolutionary, carbon fibre, hot cured polyurethane shell. Huge wall thicknesses on high wear areas ensures long bowl life. Shore hardness is 65D with a UTS of 30MPa and UE of 450%. This results in an ultra durable, highly abrasion resistant work chamber that resists all common acids.

***Screens:***

Supplied in a variety of aperture sizes and materials, screen inserts are easily removed to enable quick changes of applications. Special screens can be made if required.

***Motor:***

Powerful, direct, flange-mounted vibratory motor. Housed as an integral part of the machine, this specially constructed unit is designed for use on either 220/240V or 385/440V 3Ø 50-60Hz supply.

***Base:***

Cast in one piece from a specially formulated polyurethane and strengthened with carbon fibre reinforcing, the base is non-corrosive and virtually indestructible.

***Springs:***

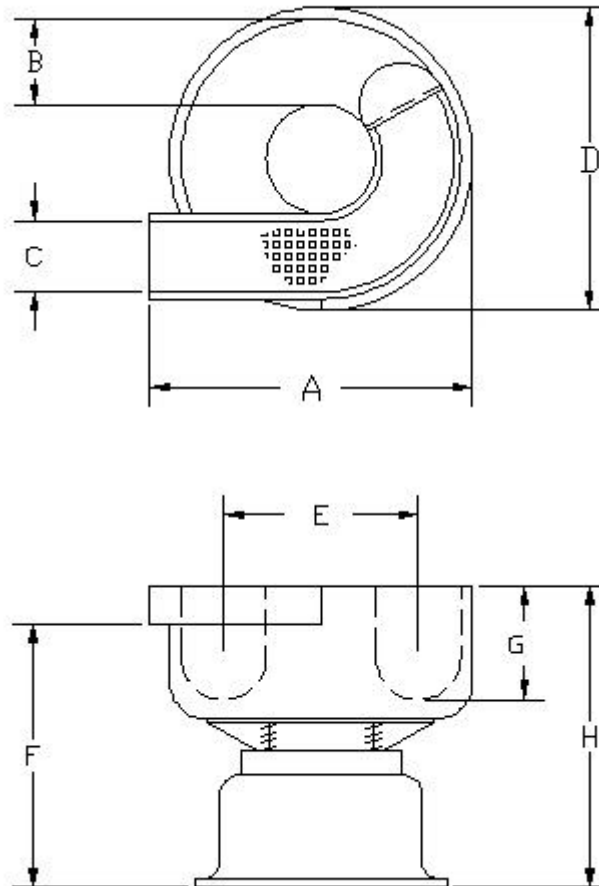
High column strength coil compression type, designed to prevent vibration transfer to the floor.

***Fastenings:***

All major component fastenings are high tensile, grade 8.8. All nuts are fitted with plastic anti-vibration inserts.



### Dimensions:



Model	BV1DR	BV2DR	BV3DR	BV5DR	BV10DR	BV15DR
A	650	810	870	1045	1475	1735
B	150	250	280	325	380	510
C	160	214	222	290	300	310
D	615	760	820	995	1400	1660
E	450	500	500	610	900	1220
F	655	730	730	815	910	1010
G	200	270	310	400	450	560
H	745	840	870	945	1050	1160

# **B.V. PRODUCTS**

**Mass Finishing Technology**



## **Technical Data:**

Model	BV1DR	BV2DR	BV3DR	BV5DR	BV10DR	BV15DR
Capacity (L)	28	56	85	150	280	420
Bowl Volume (L)	40	100	135	225	470	650
Weight (kg)	60	80	150	250	610	775
Motor Type	Invicta SFL 15-3/4	Invicta SFL 20-5/4	Invicta SFL 20-5/4	Invicta SFL 25-14/4	Invicta SFL 30-25/4	Invicta SFL 50-45/4
Motor Input Power (W)	355	450	450	675	1135	3740
Motor Output Power (W)	175	250	250	500	1150	3350

Website: [www.bvproducts.com.au](http://www.bvproducts.com.au)  
Email: [mail@bvproducts.com.au](mailto:mail@bvproducts.com.au)